



UPSPro[®] Series

DATA SHEET

Outdoor UPS Systems

Features

- Weatherproof, UV resistant, outdoor enclosures
- Powered over CAT5 cable using POE and/or Solar
- Generous interior space for customer electronics
- Wall or Pole Mounting
- Isolates Customer Equipment from Power Line Surges
- High Quality AGM VR Sealed Lead Acid or LiFePO4 Lithium batteries
- Advanced battery charge controller protects against overcharge and over discharge

Applications

- Wireless Base Stations and Clients
- Surveillance Cameras
- Wireless Bridge and Repeaters
- Remote Sensors
- Mission critical outdoor power
- Backup Power Systems

Description

The UPSPro[®] series outdoor enclosures are designed for applications that require a backup power source in order to maintain uninterrupted service to customers. The enclosure is powered over a CAT5 network cable via Power over Ethernet (PoE) using a PoE Supply/Inserter (included).

Features include an advanced battery charge controller to protect against over-charging or over-discharging of the valve regulated sealed lead acid AGM batteries or LiFePO4 Lithium batteries. Enclosures have multiple ports for CAT5 cable, antenna cables/connectors or other cabling. They are vented to prevent residual buildup of hydrogen gas.

There is some space inside the enclosures for customer electronics such as controllers, wireless AP or CPE cards, sensors, inverters, etc. Equipment runs on battery power which isolates it from power line surges which is a main cause of outdoor equipment failure.

Models are equipped with a Solar Ready controller so they can also be powered using solar panels in addition to or instead of the PoE power supply.

Multiple configurations are available for 12V or 24V systems with various battery storage capacities.

A typical 250mW wireless access point with average power consumption of 3.5W will run 15 hours on a 9Ah AGM battery. You can expect the same load will run 23hrs on a Lithium battery.



UPSPro[®]
Die Cast Enclosure



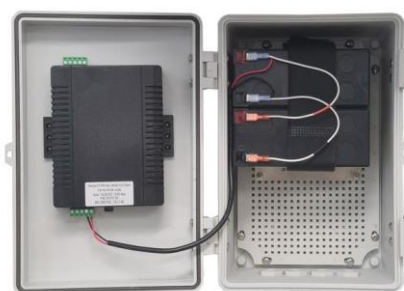
UPSPro[®]
Polycarbonate Enclosure

Specifications

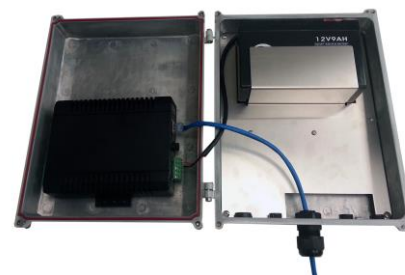
	UPS-DC12xx	UPS-PL12xx	UPS-PL24xx
POE Output Voltages Available (DC)	24V, 48V		24V and 48V
Available Capacities (Amp Hours)	9Ah	18Ah, 36Ah, 40Ah	9Ah, 18Ah, 36Ah, 40Ah
Total Output Power	30W	30W	60W
Maximum POE Input Voltage	57V		
Battery Voltage (DC)	12V		24V
Battery Type	Valve Regulated Sealed Lead Acid / Absorbent Glass Mat (AGM) or LiFePO4 Lithium		
Battery Life	5 Years		
Controller Type	Dual Input Solar/POE, PWM, 12V 10A Max Solar Panel Size 100W		Dual Input Solar/POE, PWM, 24V 10A Max Solar Panel Size 200W
Overcharge Protection	14.4V		28.6V
Over-discharge protection	11.0V		22.0V
Over-discharge recovery voltage	12.0V		24.0V
Controller Self Consumption	<0.5W		
Charging POE Power Supply	120/220VAC In ; 24-36VDC 90W min Out		120/220VAC In ; 36-48VDC 90W Min Out
Enclosure Type	Die Cast Aluminum	Polycarbonate	
Enclosure External Size	11 x 8.5 x 3.5" (279 x 216 x 89mm)	SM: 12 x 8.5 x 7" (305 x 216 x 178mm) LG: 15.7 x 12.7 x 6.7" (400 x 323 x 170mm)	
Enclosure Internal Size	10 x 7.75 x 3" (254 x 197 x 76mm)	SM: 11 x 7 x 6" (279 x 178 x 152mm) LG: 15 x 11 x 6.5" (381 x 279 x 165mm)	
Operating Temperature	-30°C to +60°C (-22°F to 140°F) Note: Lithium batteries can discharge to -30C but cannot charge below 0C (32F). Use of Lithium recommended for temperate climates only.		
System Weight (without batteries)	4lb (1.8kg)	SM: 5lb (2.2kg) LG: 7lb (3kg)	
Battery Weight (each)	Lead Acid: 5.5lb (2.5kg), Lithium: 2.2lb (1kg)		
Warranty	3 Years		



UPSPRO® LG Polycarbonate Enclosure System



UPSPRO® SM Polycarbonate Enclosure System



UPSPRO® Die Cast Enclosure System

System Ordering:

Model #	Enclosure Type	Battery Voltage	POE Output Voltage	Battery Capacity	Solar Ready Max Panel Size
UPS-DC1224-9	Die Cast	12VDC	24VDC	9Ah	100W
UPS-DC1248-9	Die Cast	12VDC	48VDC	9Ah	100W
UPS-PL1224-18	SM Polycarbonate	12VDC	24VDC	18Ah	100W
UPS-PL1248-18	SM Polycarbonate	12VDC	48VDC	18Ah	100W
UPS-PL1224-36	LG Polycarbonate	12VDC	24VDC	36Ah	100W
UPS-PL1248-36	LG Polycarbonate	12VDC	48VDC	36Ah	100W
UPS-PL2424-18	SM Polycarbonate	24VDC	24VDC	18Ah	200W
UPS-PL2424-36	LG Polycarbonate	24VDC	24VDC	36Ah	200W
UPS-PL2448-18	SM Polycarbonate	24VDC	48VDC	18Ah	200W
UPS-PL2448-36	LG Polycarbonate	24VDC	48VDC	36Ah	200W
UPS-PL1224-40L	LG Polycarbonate	12VDC	24VDC	40Ah	100W
UPS-PL1248-40L	LG Polycarbonate	12VDC	48VDC	40Ah	100W
UPS-PL2424-40L	LG Polycarbonate	24VDC	24VDC	40Ah	200W
UPS-PL2448-40L	LG Polycarbonate	24VDC	48VDC	40Ah	200W

Part Number Definition:**UPS-DC 12 48-9**Enclosure Type

DC - Die Cast Aluminum
 PL - Polycarbonate Plastic

Battery Voltage

12 - 12V
 24 - 24V

POE Out Voltage

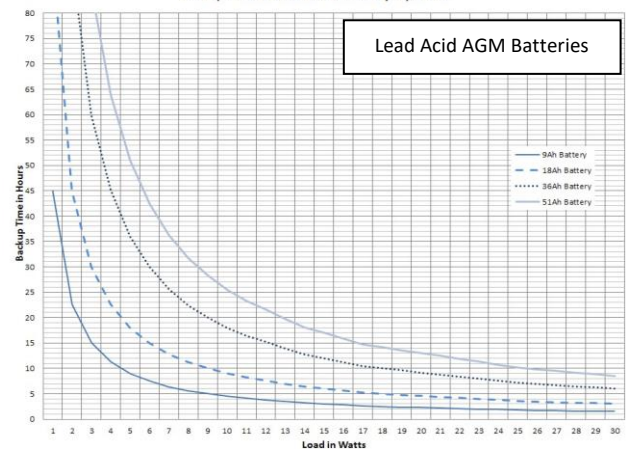
24 - 24V
 48 - 48V

Storage Capacity

9 - 9Ah
 18 - 18Ah
 36 - 36Ah
 40L - 40Ah Lithium



UPSPro™
 Backup Time vs Load - Various Battery Capacities

**For further information contact:**

Tyconsystems.com

